

Nuuo Mainconsole Instructional Manual

Below are guidelines on using the Nuuo console. Full vendor manual can be found [here](#):

Nuuo Remote Live Viewer

Opening/Closing The Application

The Remote Live Viewer application will launch in full screen mode. To minimize the software, you can click the minimize button next to the power button. The power button will close the application.

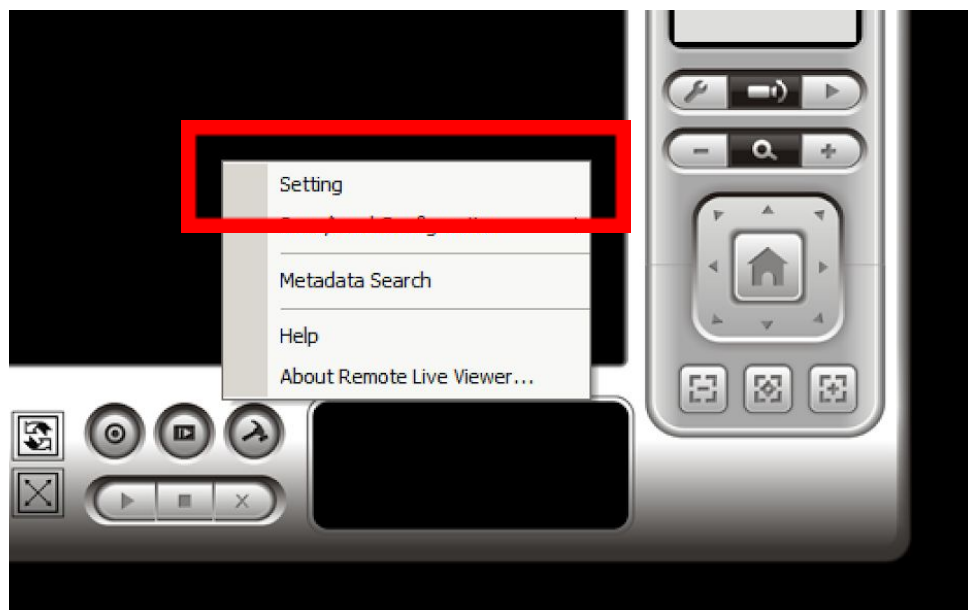


Adding and Logging into The CCTV Server

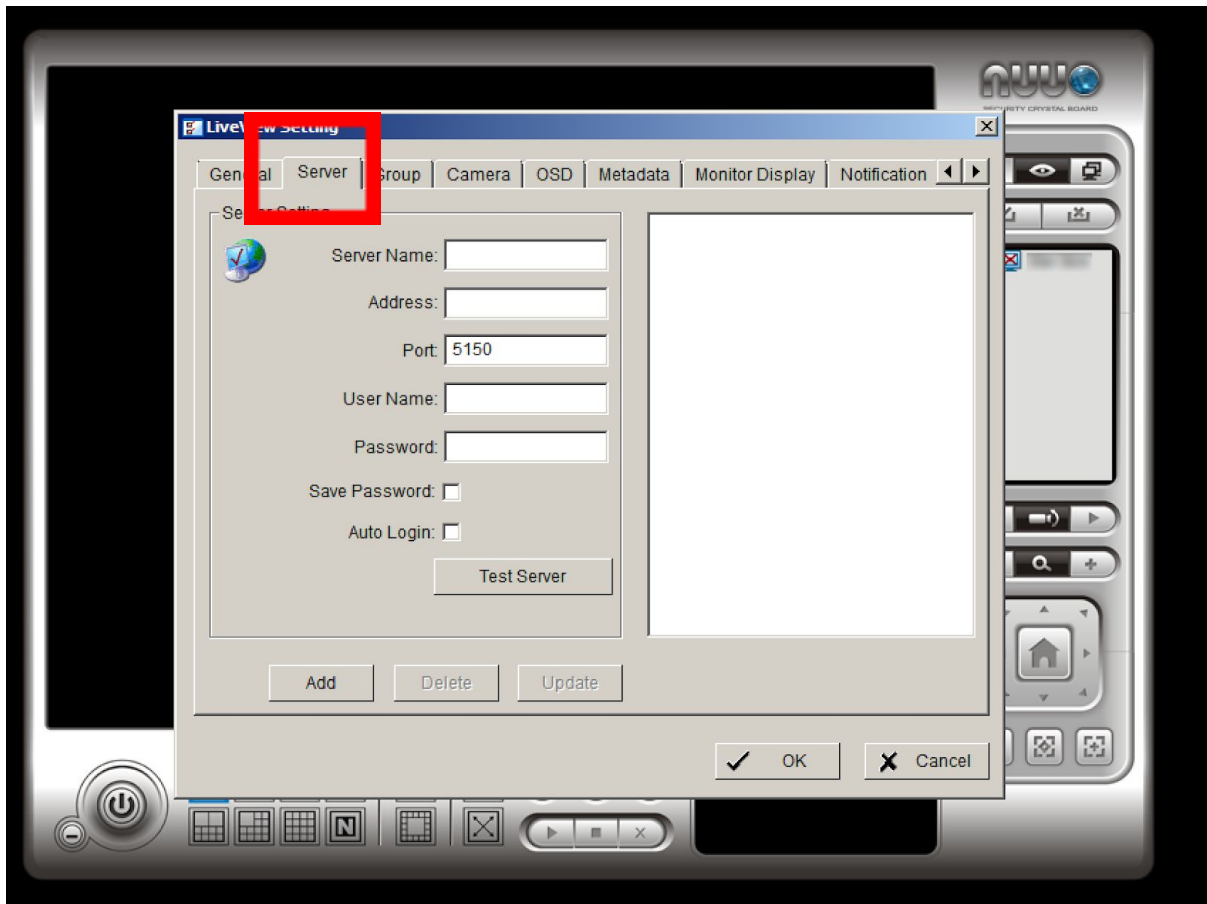
The Live Viewer application allows you to add more than one CCTV server. To add a server, click the settings icon.



Then click 'Setting'.



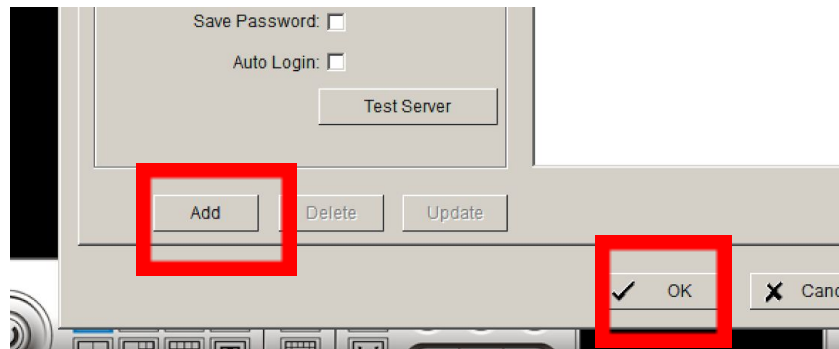
The settings window will appear. Along the top of the window there will be a number tabs. Click on the 'Server' tab.



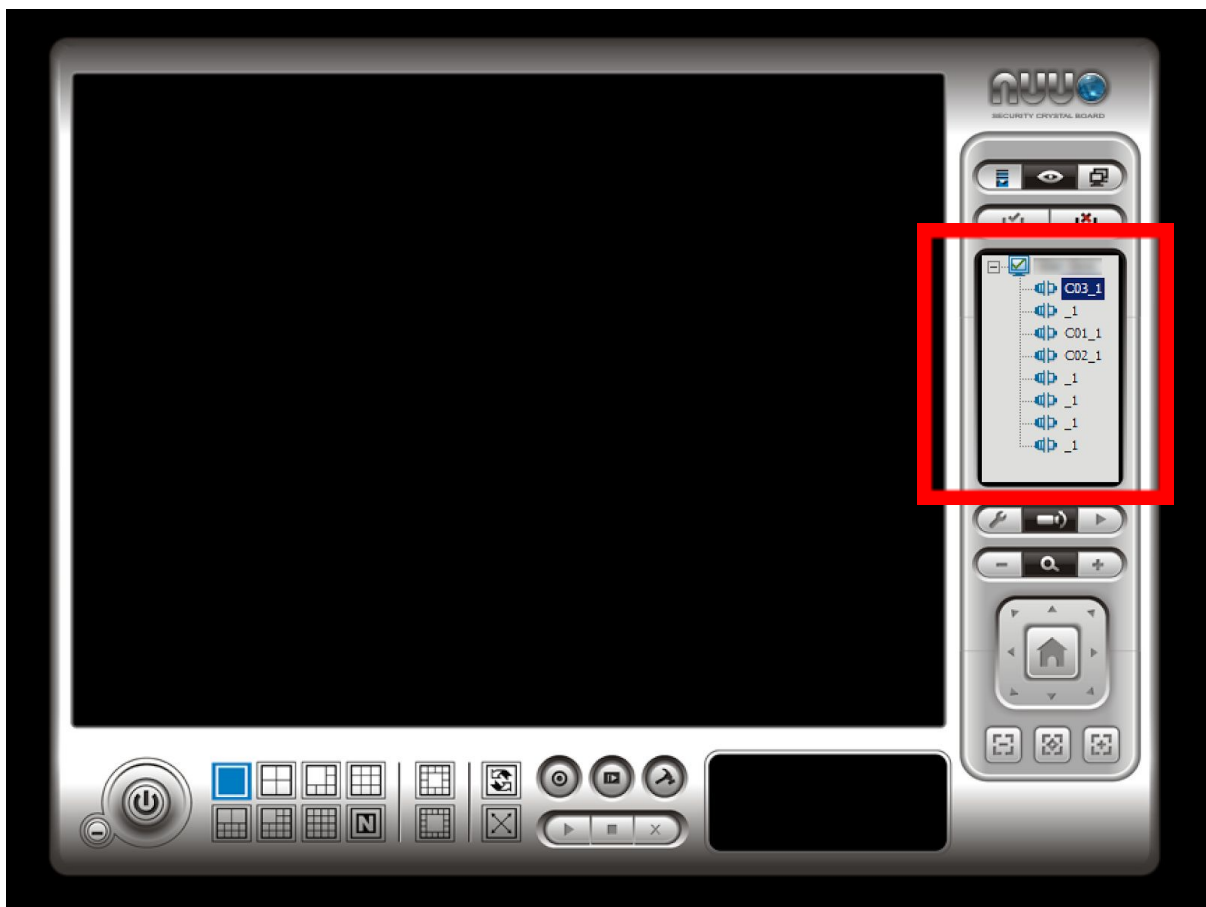
Fill in the details as follows:

- **Server Name:** The name to call your server. This name will appear in the list of servers, so it is good to call it something identifiable and readable.
- **Address:** The address that the server resides at. E.g. ccXXX-XXXX.dyndns.org
- **Port:** Default 5150
- **User Name:** The username that you have been given to log into the server
- **Password:** The password that you have been given to log into the server.
- **Save Password:** The application won't ask for a password when you log into the server if this is enabled.
- **Auto Login:** The application will automatically log you into the server and therefore immediately display all cameras.

Then click 'Add' to save the server. Then click 'OK'.



If you correctly entered your details, then the available cameras will be display in the list to the right.

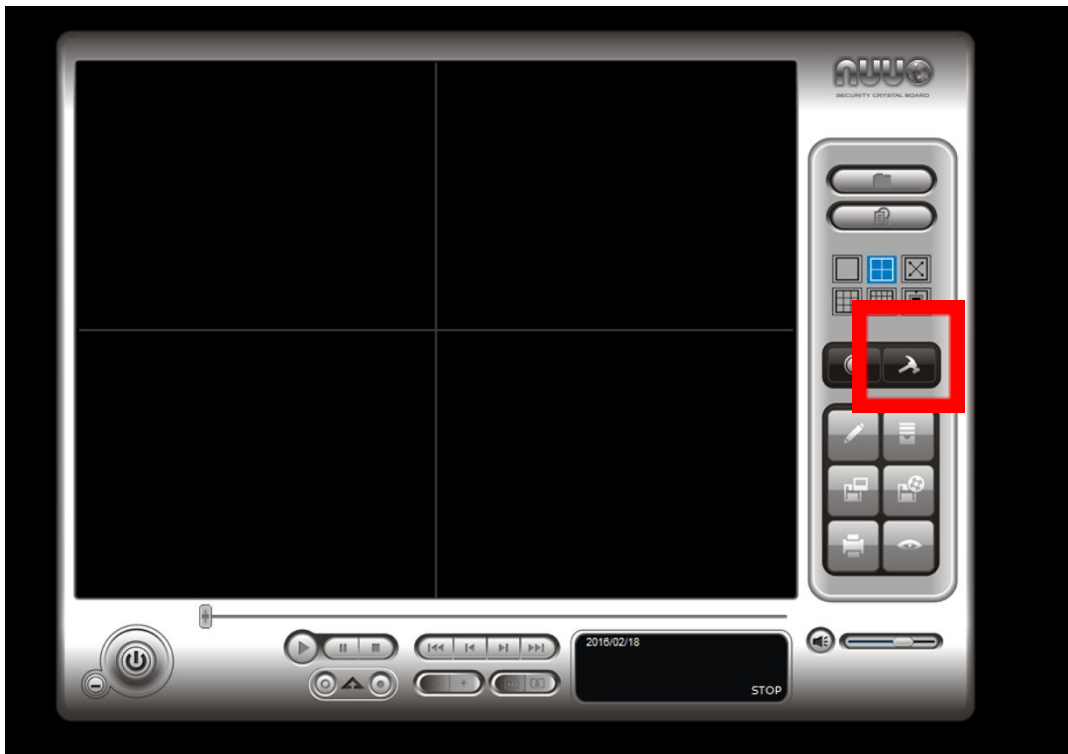


You can display the camera in the viewer by double click on the camera you want to view.

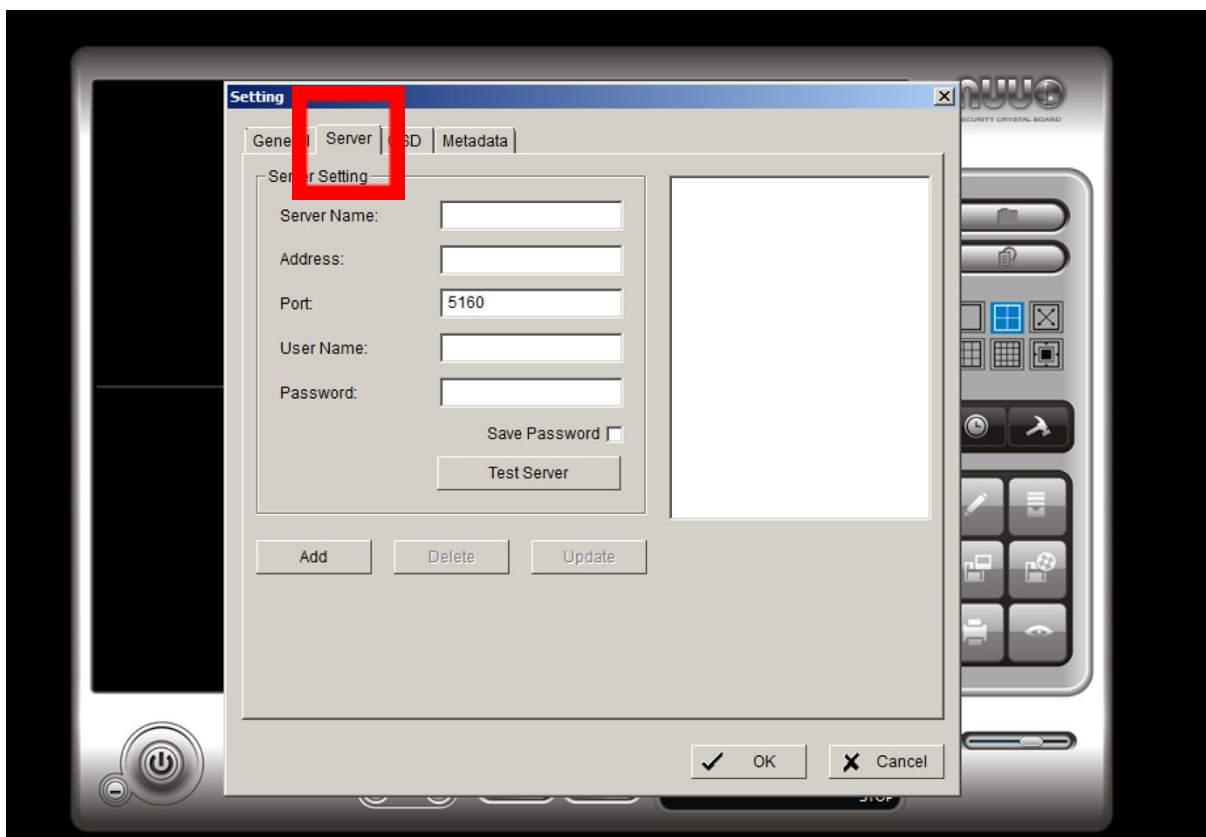


Nuuo Playback Viewer

Once the application is open for the first time. You will have to add the server. You can do this by clicking the settings button.

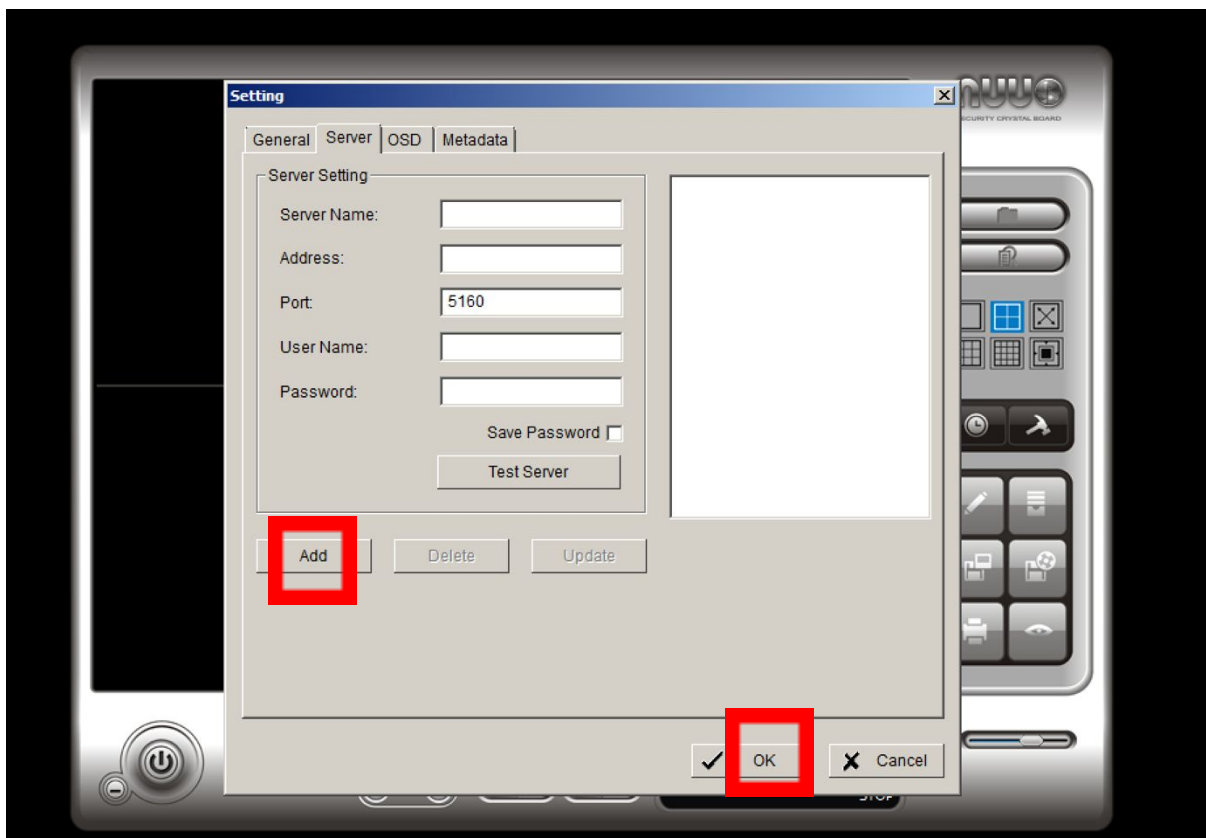


Click on the server tab and fill in the information required.

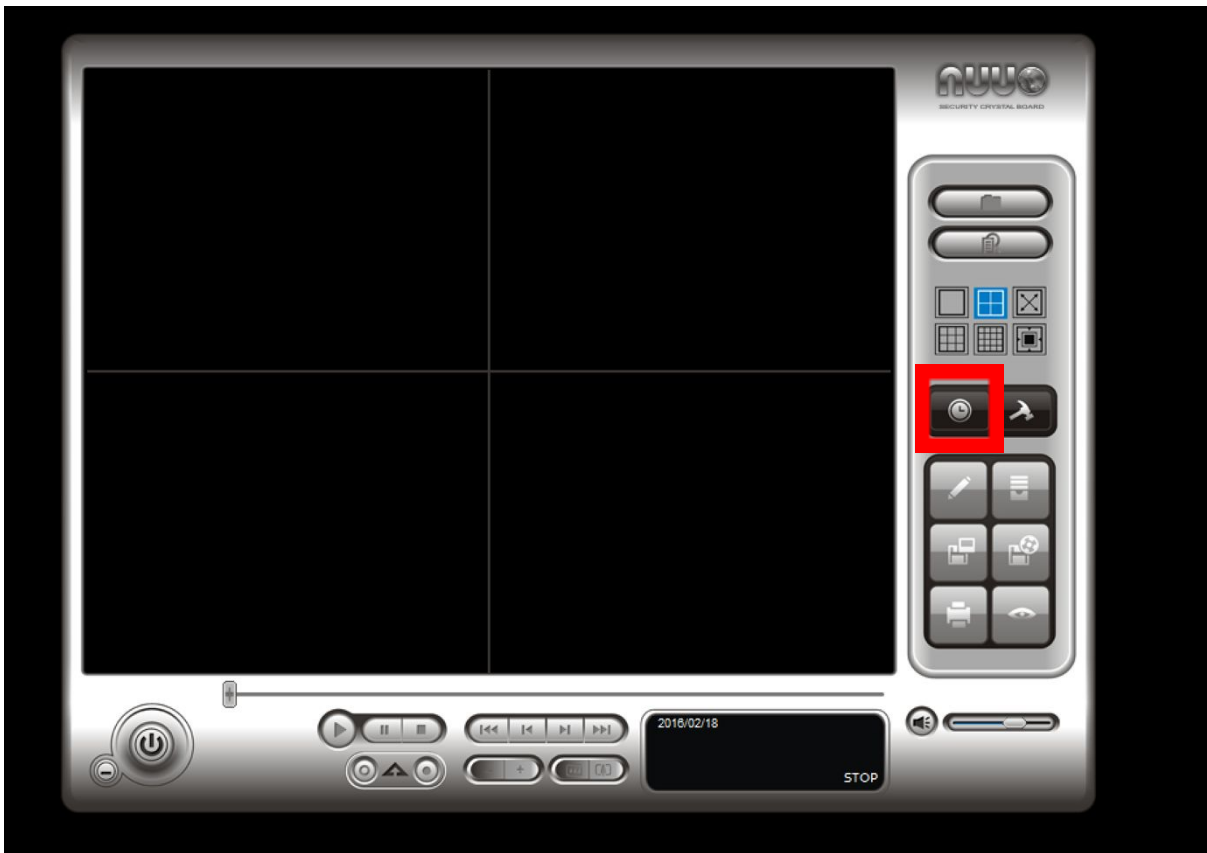


- Server Name: The name to call server. This name will appear in the list of servers, so it is good to make it something memorable.
- Address: The address that the server resides at. E.g. ccXXX-XXXX.dyndns.org
- Port: Default 5150
- User Name: The username that you have been given to log into the server
- Password: The password that you have been given to log into the server.
- Save Password: The application won't ask for a password when you log into the server if this is enabled.

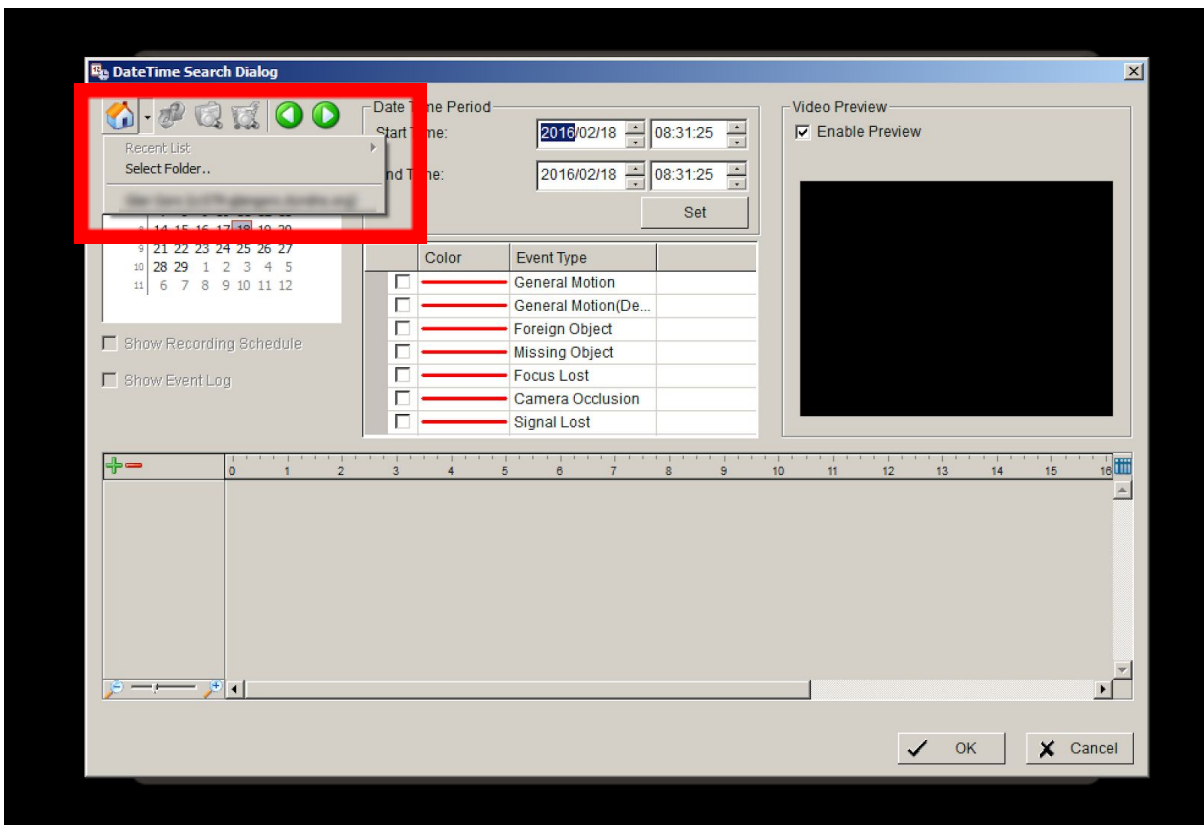
Click 'Add', then click 'OK',



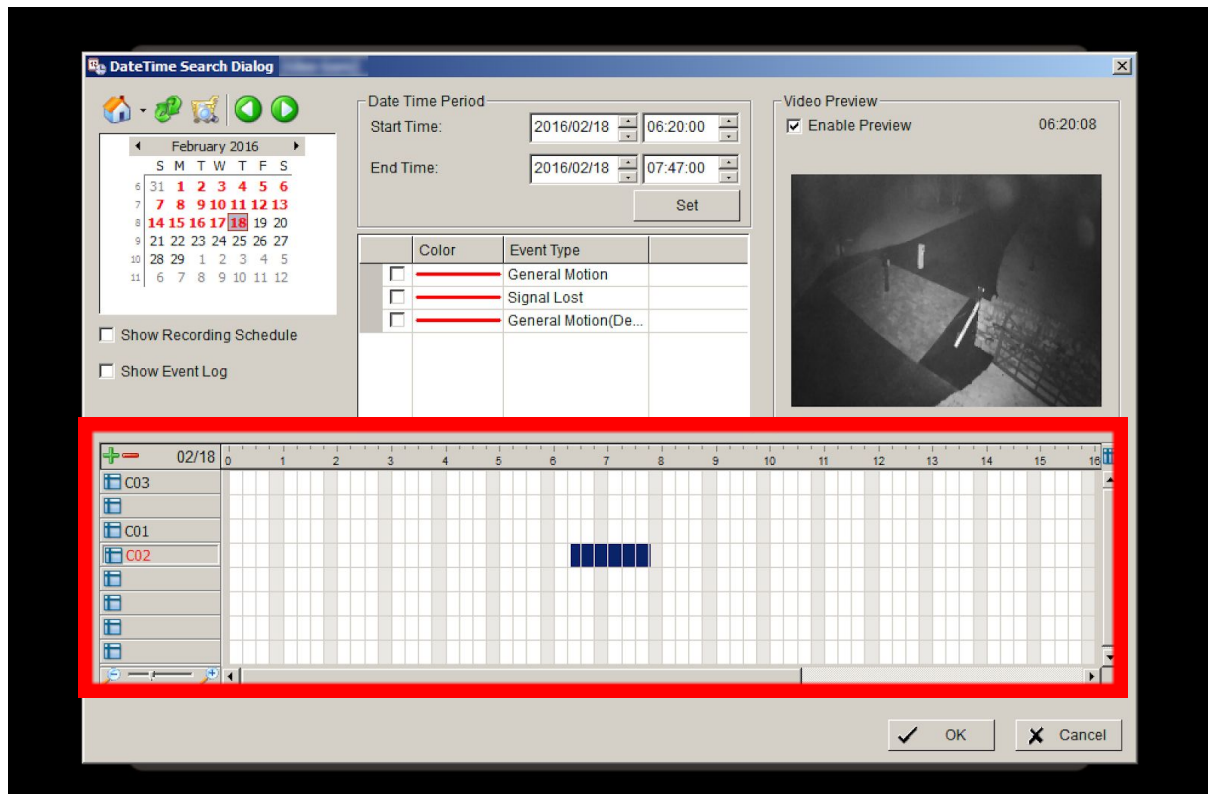
To load video files from the server, click on the Date/Time Button.



Select the server you have added from the list.



This will display the cameras available in the time. From which you can click and drag across the timeline of the video you wish to view. Once you are done, click 'OK'.



The video files will be loaded from the server for you to playback.

